

PLANT SCHEDULE

QUANTITY	KEY	BOTANICAL NAME	COMMON NAME	CALIPER SIZE
----------	-----	----------------	-------------	--------------

CANOPY TREES

2	AC EQ	Acer platanoides 'Emerald Queen'	Emerald Queen Maple	2 1/2" Cal
6	AC LE	Acer saccharum 'Legacy'	Legacy Sugar Maple	2 1/2" Cal
2	CA 9P	Catalpa speciosa	Western Catalpa	2 1/2" Cal
6	CE OC	Celtis occidentalis	Common Hackberry	2 1/2" Cal
3	FR FG	Fraxinus nigra 'Fall Gold'	Fall Gold Ash	2 1/2" Cal
2	FR MA	Fraxinus pennsylvanica 'Marshall'	Marshall Green Ash	2 1/2" Cal
3	GR DI	Gymnocladia dioica	Kentucky Coriase Tree	2 1/2" Cal
9	PO AC	Populus x acuminata	Lanceleaf Cottonwood	2 1/2" Cal
5	QU BI	Quercus bicolor	Burr Oak	2 1/2" Cal
2	QU MA	Quercus macrocarpa	Swamp White Oak	2 1/2" Cal
2	QU SK	Quercus robur 'Skymaster'	Skymaster Oak	2 1/2" Cal
2	SA AM	Salix amygdaloides	Peachleaf Willow	2 1/2" Cal

ORNAMENTAL TREES

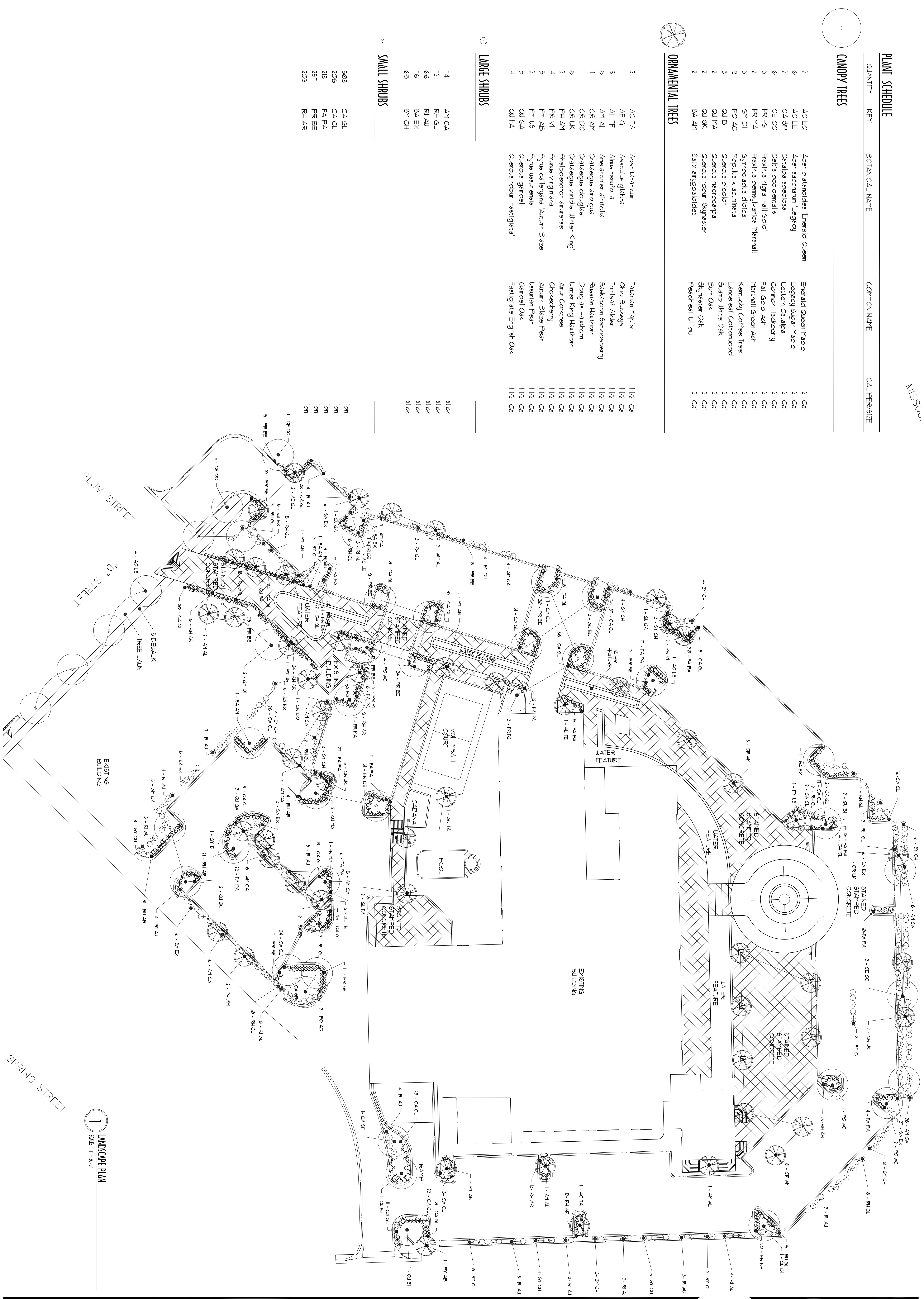
2	AC TA	Acer tataricum	Tatarian Maple	1 1/2" Cal
1	AE GL	Aesculus glabra	Ohio Buckeye	1 1/2" Cal
3	AL TE	Alnus tenuifolia	Thimbleleaf Alder	1 1/2" Cal
6	AM AL	Amelanchier alnifolia	Saskatoon Serviceberry	1 1/2" Cal
1	CR AM	Crataegus ambigua	Russian Hawthorn	1 1/2" Cal
1	CR DO	Crataegus douglasii	Douglas Hawthorn	1 1/2" Cal
6	CR UK	Crataegus viridis 'Winter King'	Winter King Hawthorn	1 1/2" Cal
2	FR AM	Fraxindendron amurense	Amur Corktree	1 1/2" Cal
4	FR VI	Fraxus virginiana	Chickadee	1 1/2" Cal
5	FR AB	Fraxus calleryana 'Autumn Blaze'	Autumn Blaze Pear	1 1/2" Cal
2	FR US	Fraxus ussuriensis	Ussurian Pear	1 1/2" Cal
5	QU GA	Quercus gambelii	Gambel Oak	1 1/2" Cal
4	QU FA	Quercus robur 'Fastigiata'	Fastigiata English Oak	1 1/2" Cal

LARGE SHRUBS

14	AM CA	Allion	Allion	Allion
12	RI GL	Allion	Allion	Allion
6/6	RI AU	Allion	Allion	Allion
7/6	SA EX	Allion	Allion	Allion
6/5	ST CH	Allion	Allion	Allion

SMALL SHRUBS

3/0/3	CA GL	Allion	Allion	Allion
2/0/6	CA CL	Allion	Allion	Allion
2/1/3	FA PA	Allion	Allion	Allion
2/5/1	FR BE	Allion	Allion	Allion
2/0/3	RI AR	Allion	Allion	Allion



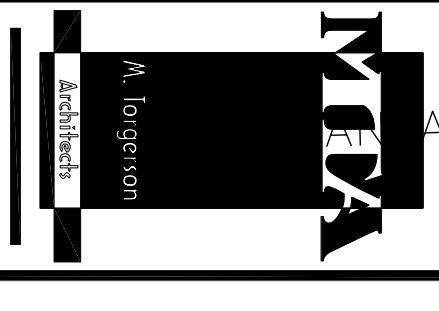
1 LANDSCAPE PLAN
SCALE: 1" = 30'-0"

A-002

REVISIONS:

DATE: 02/18/2008

223 North College Avenue
Fort Collins, CO 80524
970.416.7431
1.888.416.7431
Fax: 970.416.7435
Email: Mika@Architex.com
<http://www.Architex.com>



PUEBLO ICEHOUSE P.U.D.
300-BLOCK OF SOUTH SANTA FE AVE.
PUEBLO, COLORADO
PROJECT NUMBER: 96